



SUBNATIONAL PRIMER: DAVAO REGION

TRANSPARENCY AND ACCOUNTABILITY IN THE EXTRACTIVE INDUSTRY



PARTICIPATING COMPANIES

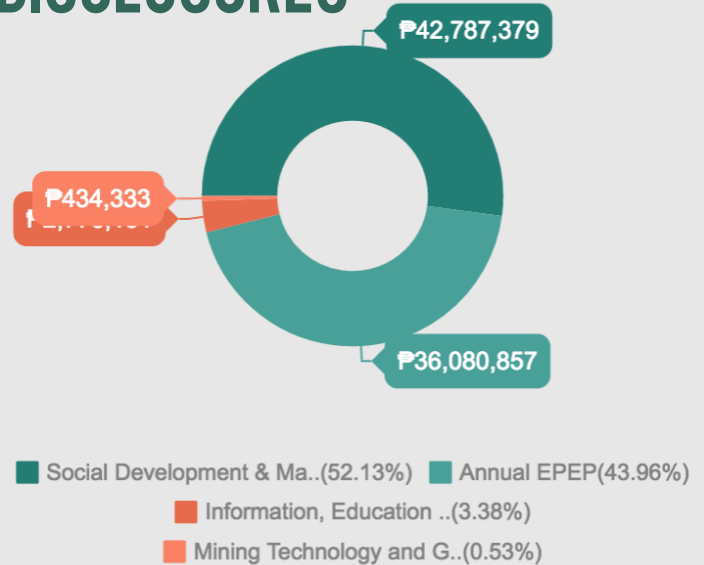
Mining:

1. Apex Mines (2012 and 2013)
2. TVI Resources Development (2012 and 2013)

TVI RESOURCES

SOCIAL AND ENVIRONMENTAL DISCLOSURES

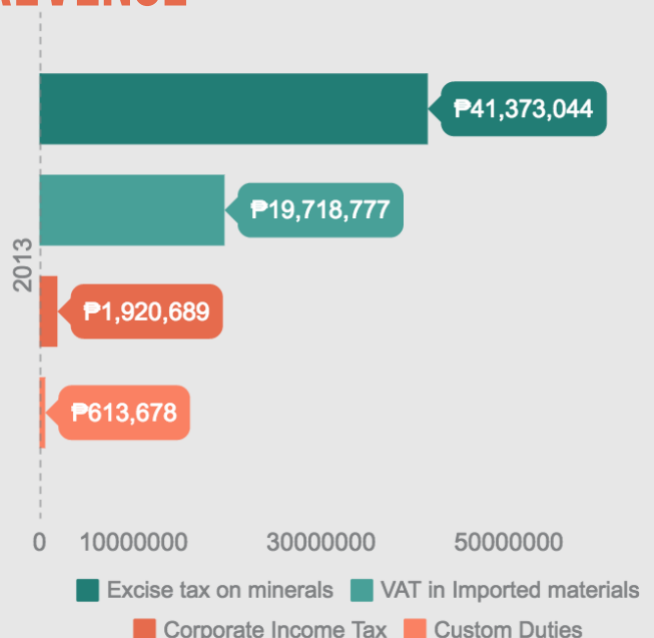
TVI Resources Development's biggest spending under mandatory expenditures is the state-mandated social development and management program amounting to P42.8 million followed by the annual environmental protection and enhancement program P36 million.



FINANCIAL DISCLOSURES

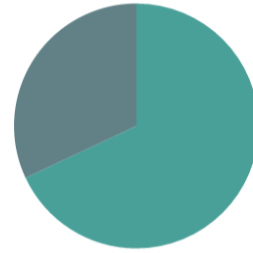
PAYMENTS TO GOVERNMENT, BY REVENUE

TVI Resources Development's biggest payment to government is the excise tax on minerals costing P41.3 million followed by VAT on imports amounting to P19.8 million.



PAYMENTS TO GOVERNMENT, BY AGENCY

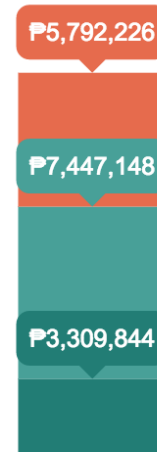
TVIRD's biggest collecting agency is the Bureau of Internal Revenue followed by the Bureau of Customs.



■ LGU(0%) ■ BIR(68.04%) ■ MGB(0%) ■ NCIP(0%)
■ BOC(31.96%)

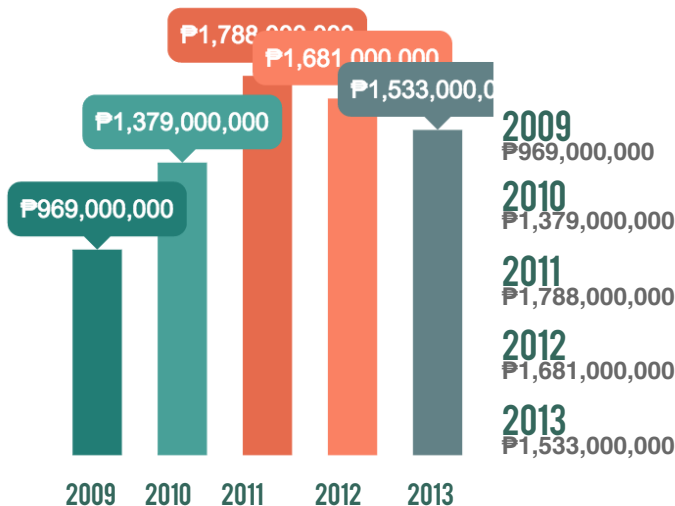
LGU SHARES

Estimates using excise tax collections and the formula from the Local Government Code. Actual receipt may vary due to delay in downloading of funds by national government.



■ Province (20%) ■ Municipality (45%) ■ Barangay (35%)

OPERATIONS DISCLOSURES PRODUCTION VALUE

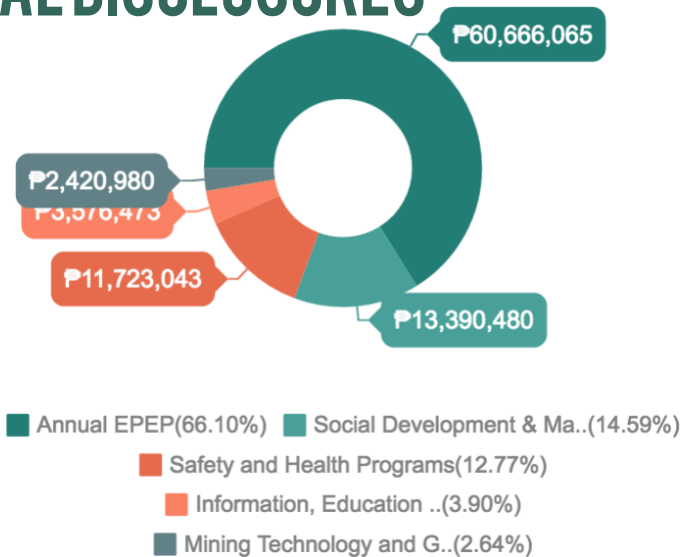


APEX MINES

SOCIAL AND ENVIRONMENTAL DISCLOSURES

Apex Mines biggest social and environmental disclosure is its annual environmental protection and enhancement program at P60.6 million followed by social development and management program amounting to P13.3 million.

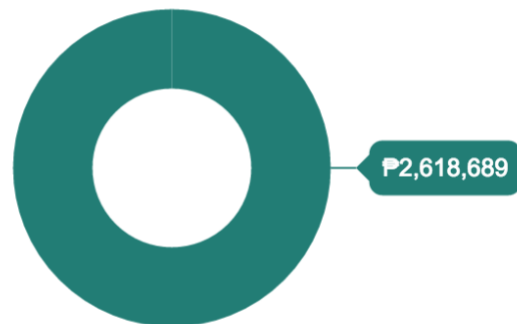
There were no reconciled environmental funds.



FINANCIAL DISCLOSURES

PAYMENTS TO GOVERNMENT, BY REVENUE

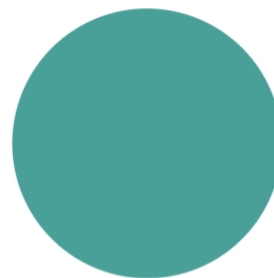
Apex Mines' only reconciled payment is its corporate income tax at P2.6 million. Other payments were unreconciled due to lack of supporting documents.



■ Corporate Income Tax(100%)

PAYMENTS TO GOVERNMENT, BY AGENCY

Apex Mines' only reconciled payment is its payment to the Bureau of Internal Revenue. Payments to other agencies were unreconciled due to lack of supporting documents.



■ LGU(0%) ■ BIR(100%) ■ MGB(0%) ■ NCIP(0%)
■ BOC(0%)